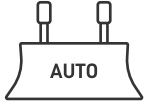


FJD H36

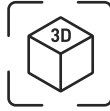
3D MOTOR GRADER CONTROL SYSTEM

MAKE AN ACCURATE GRADE IN ONE GO

FJD H36 can obtain real-time working position and attitude data based on high-precision satellite positioning technology and multi-type sensor modules. It can adjust blade attitude automatically leading to accurate leveling operations.



Automatic
Blade Control



Real-time 3D
Visual Guidance



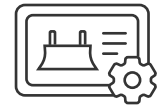
Online
support & OTA



Centimeter Accuracy



High Flatness



Task Visualization

APPLICATION SCENARIOS

- Save time and labour cost and reduce safety hazards.
- Check the construction progress and ensure the operating quality.
- Meet the needs of fine operations.

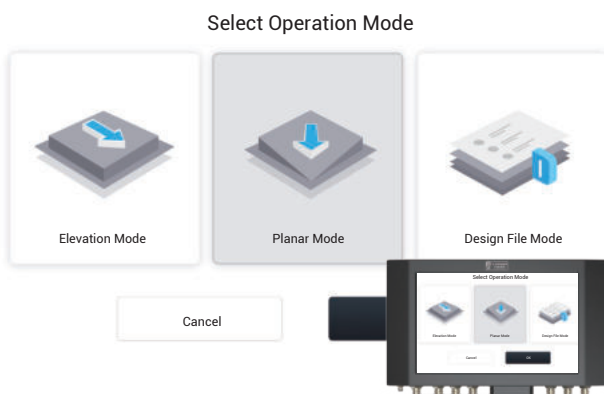


AUTOMATIC CONTROL SMOOTH AS EVER

Collect the spatial 3D coordinates of the blade in real time through GNSS technology and compare them with the design file. If deviation is found, the system will automatically adjust the mechanical shovel line through the valve control module.

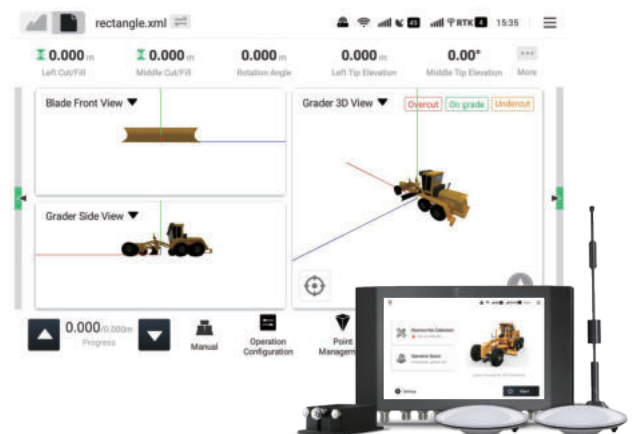


3 OPERATION MODES



There are 3 modes for blade control that make your operation easier.

3D VISUAL GUIDANCE



Innovative 3D visual guidance technology assists construction through real-time animation. No more repeated measurement and rework required.

QUICK SPECS

Control Terminal

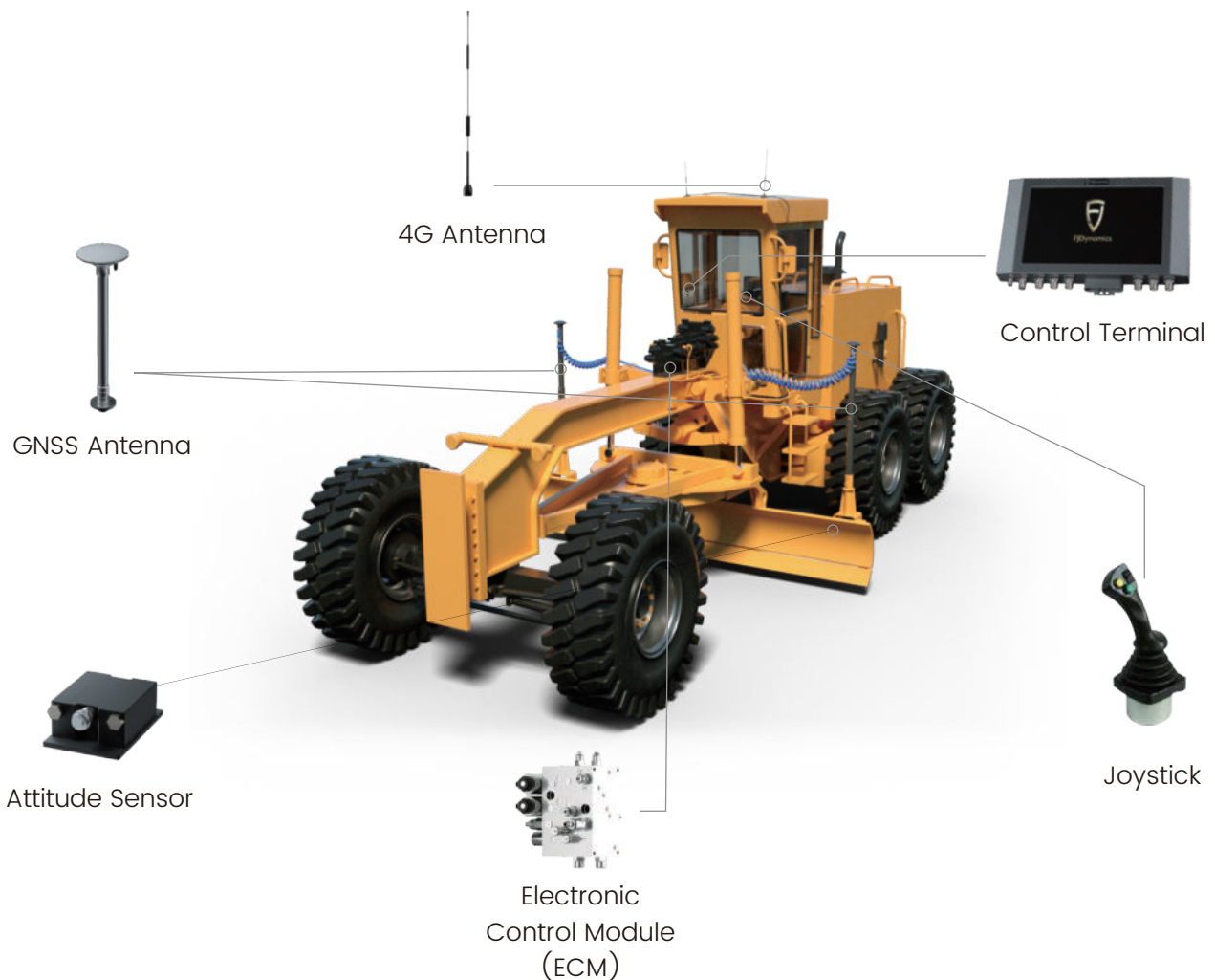
Dimensions	300×190×43 mm
Screen	10.1" LED screen
Operating temperature	-30 C to 70 C
IP rating	IP65
Power input	12-24 V

Accuracy

Operation accuracy	30 mm
Heading accuracy	0.1°

Sensor

Max. angular velocity	≤400°/s
IP rating	IP67
Operating temperature	-40 C to 85 C



Free Quote: sales.global@fjdynamics.com

Address: 15 SCOTTS ROAD #03-12, SINGAPORE

FJDynamics.com



CREATE FOR A BETTER WORLD

Copyright © 2022 FJDynamics. All rights reserved.